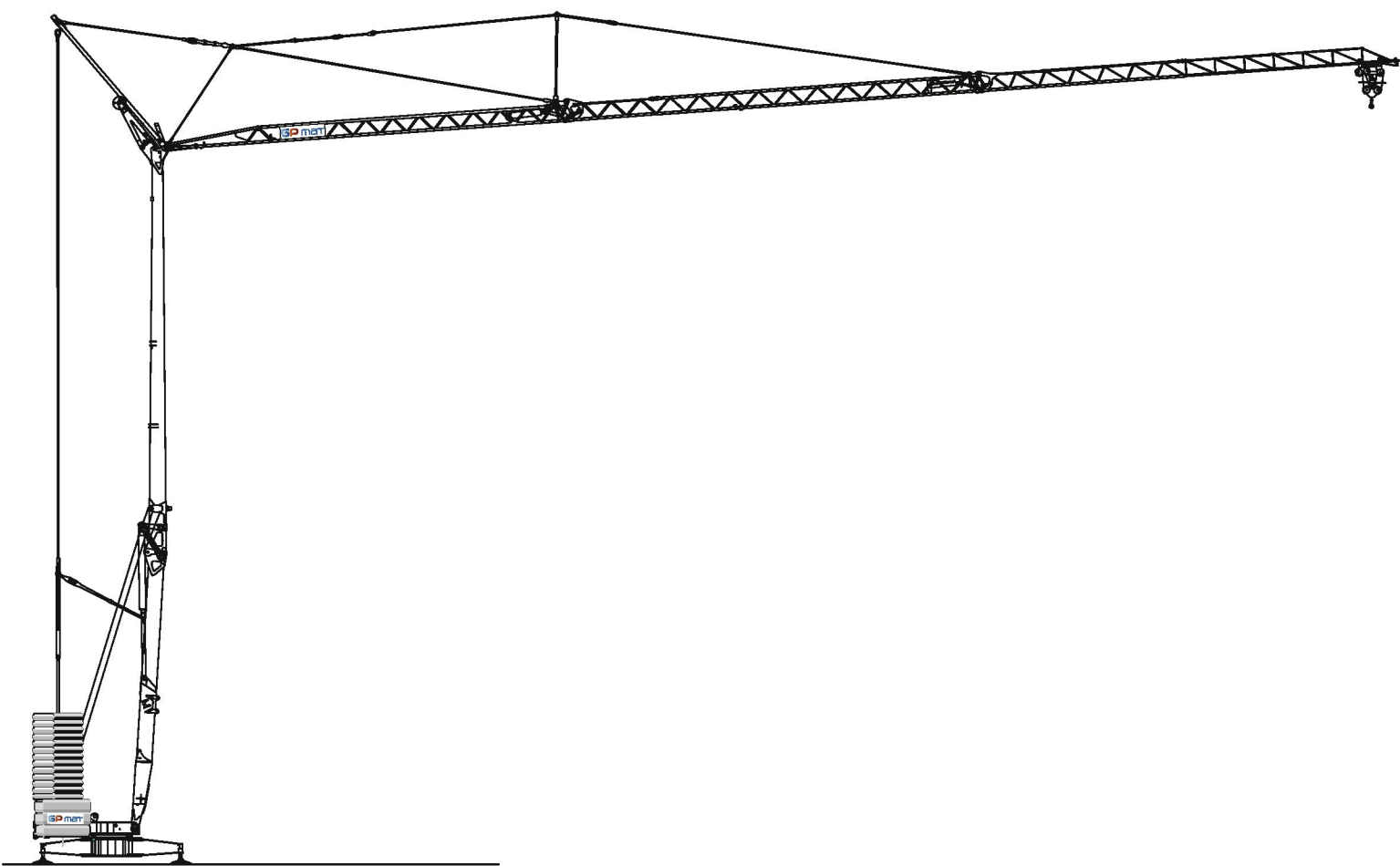


# GPmatic 42



EN 14439

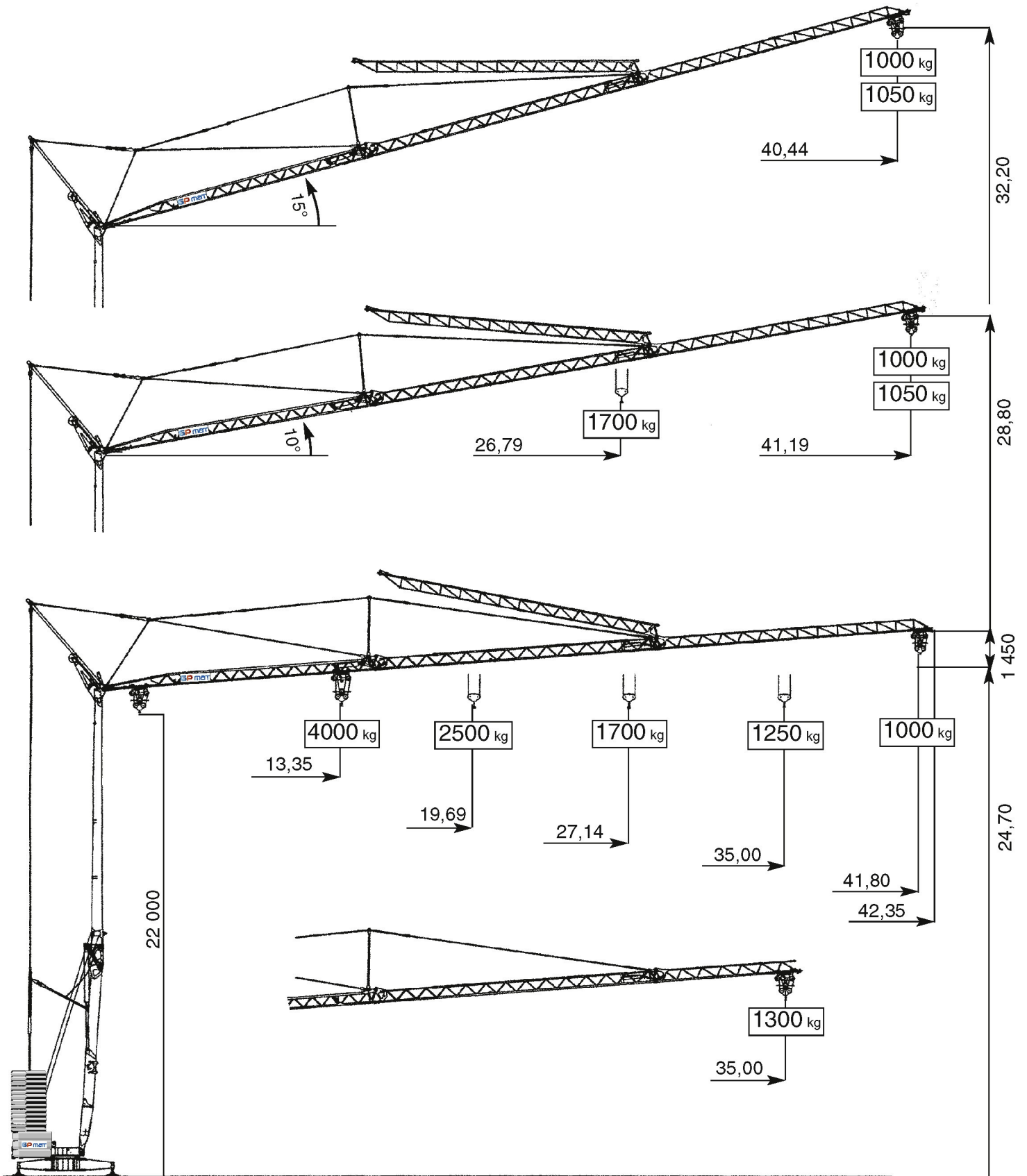
10.5/40



Ce produit vous est présenté par notre

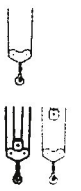
**Agent Distributeur :**





m	17,1	18	20	22	24	26	28	30	32	34	36	38	40	41,8
kg	3000	2831	2501	2236	2020	1839	1686	1555	1441	1341	1253	1175	1105	1050

m	13,3	14	16	18	20	22	24	26	28	30	32	34	36	38	40	41,8
kg	4000	3775	3209	2784	2454	2188	1971	1790	1637	1505	1391	1292	1204	1125	1055	1000



## DOTAZIONE DI SERIE

Sollevamento, rotazione e carrello a tre velocità con inverter, zincatura della struttura e dei tiranti, contrapeso, braccio impennabile, carrello rampante con motore e finecorsa alla base della torre, funzionamento con braccio ripiegato, comando a pulsantiera via cavo, carter di protezione per ralla e meccanismi, predisposizione per autozavorramento e radiocomando, armadio elettrico in acciaio inox, documentazione a norme CEE.

## STANDARD FEATURES

3-speed lifting, rotation and trolley with inverter control, galvanised structure, counterweight, pull-up jib, translation trolley with motor and limit switch at base of gantry, operation with folden jib, cable-operated pushbutton remote control, guard for slewing ring and mechanisms, designed to allow installation of self-ballasting device and radio-control, stainless steel electrical cabinet, documentation in accordance with EU standards.

## EQUIPEMENT DE SERIE


Levage, chariot et rotation à trois vitesses à contrôle électronique, galvanisation de la structure et des tirants, contrepoids, flèche relevable, moteur de chariot et fin de course à la base de la tour, fonctionnement bras replié, commande par câble, carter de protection pour la couronne et les mécanismes, prédisposition pour autolestage et commande radio, armoire électrique en acier inox, documentation conforme aux normes CEE.

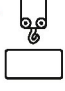




## SERIENAUSSTATTUNG

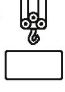




Heben, Laufkatze und Rotation mit drei Geschwindigkeiten, Strukturverzinkung, Gegengewicht, hochklappbarer Arm, aufsteigender Wagen mit Motor und Anschlag an der Basis des Turms, Funktionieren mit eingeklapptem Arm, Steuerung mit Druckknopfplatte via kabel, Schutzvorrichtungen für Drehverbindungen und Mechanismen, vorbereitung für Selbstballasteinahme und Funksteuerung, elektrischer Schrank aus rostfreiem Stahl, Dokumentation gemäß EC Vorschriften.





## DOTACION DE SERIE





Levantamiento, carro y rotación a tres velocidades con control electrónico, galvanización de la estructura, contrapeso, brazo epinable, carro rampante con motor y fin de carrera en la base de la torre, funcionamiento con brazo replgado, faccionamiento por pulsadores via cable, cárter de protección para corona de giro y mecanismos, predisposición para autocontrapeso y radiocnrol, armario eléctrico de acero inox, documentación según normas CEE.



	400 V (+10% - 10%) 50 Hz	12 kVA
---	-----------------------------	--------

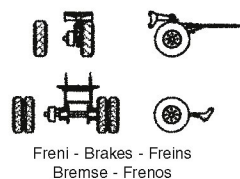
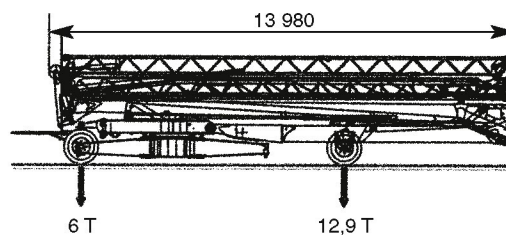
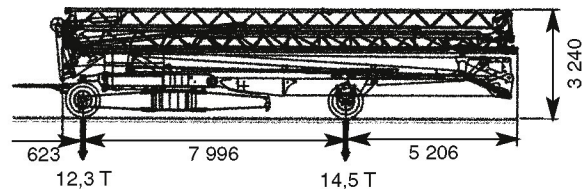
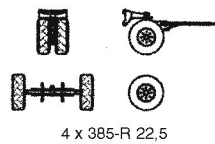
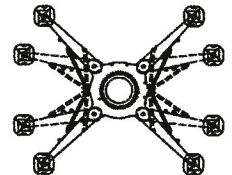
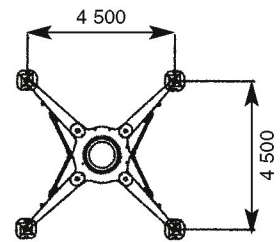
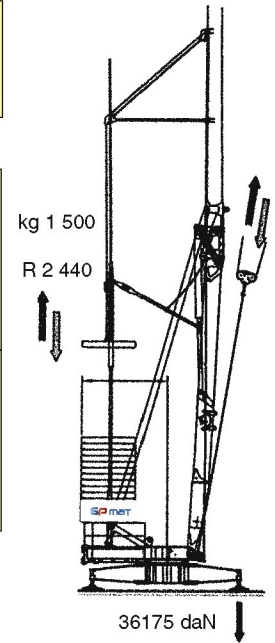
	m/l'				
	kg	8	20	46	56
	kW	3000	3000	1200	800
11 (inverter)					

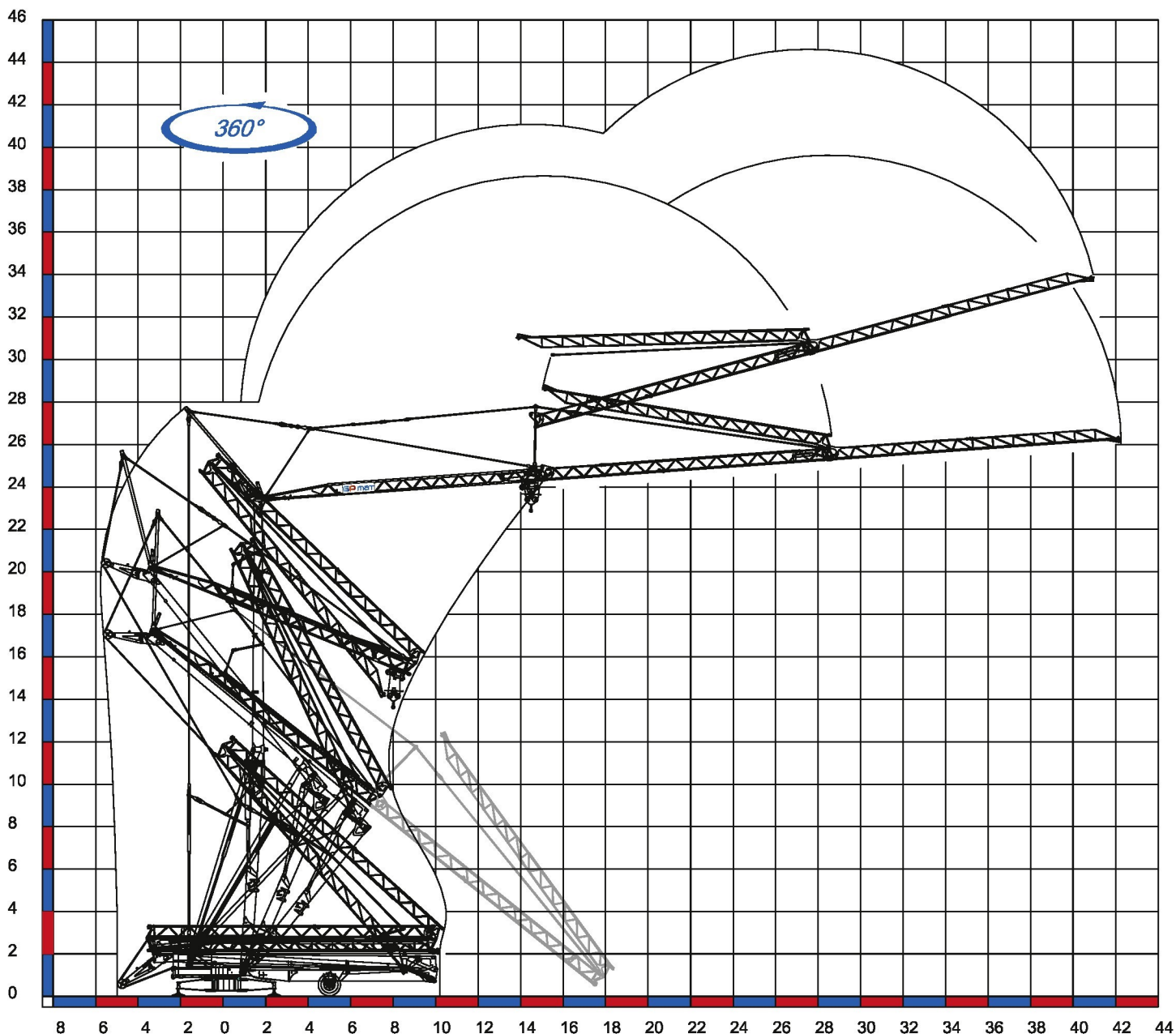
	m/l'				
	kg	8 - 4	20 - 10	46 - 23	56 - 28
	kW	2000 - 4000	2000 - 4000	1000 - 2000	800 - 1600
11 (inverter)					

	m/l'			
	kW	17,3	28,6	53,5 (→ 39,3)
3 (inverter)				

	g/l'			
	kW	0,27	0,54	0,75
3 (inverter)				

	min	
	kW	14
3		





Déroulement de montage sur 360°



**NANTES**

Z.A. de la Forêt  
44140 LE BIGNON  
Tél. 02 40 78 10 10 - Fax 02 40 78 11 00

**AVIGNON**

163 Avenue du Grenache  
ZAC du Plan  
84320 ENTRAIGUES SUR LA SORGUE  
Tél. 04 90 48 00 48 - Fax 04 90 48 00 00

contact@gpmat.fr - [www.gpmat.fr](http://www.gpmat.fr)



Filiale : GP MAT OCÉAN INDIEN



Tél : 05.90.92.23.20 Fax : 05.90.92.19.20  
E-mail : [electroservice0809@orange.fr](mailto:electroservice0809@orange.fr)

**GP matic 42** 10.5/40