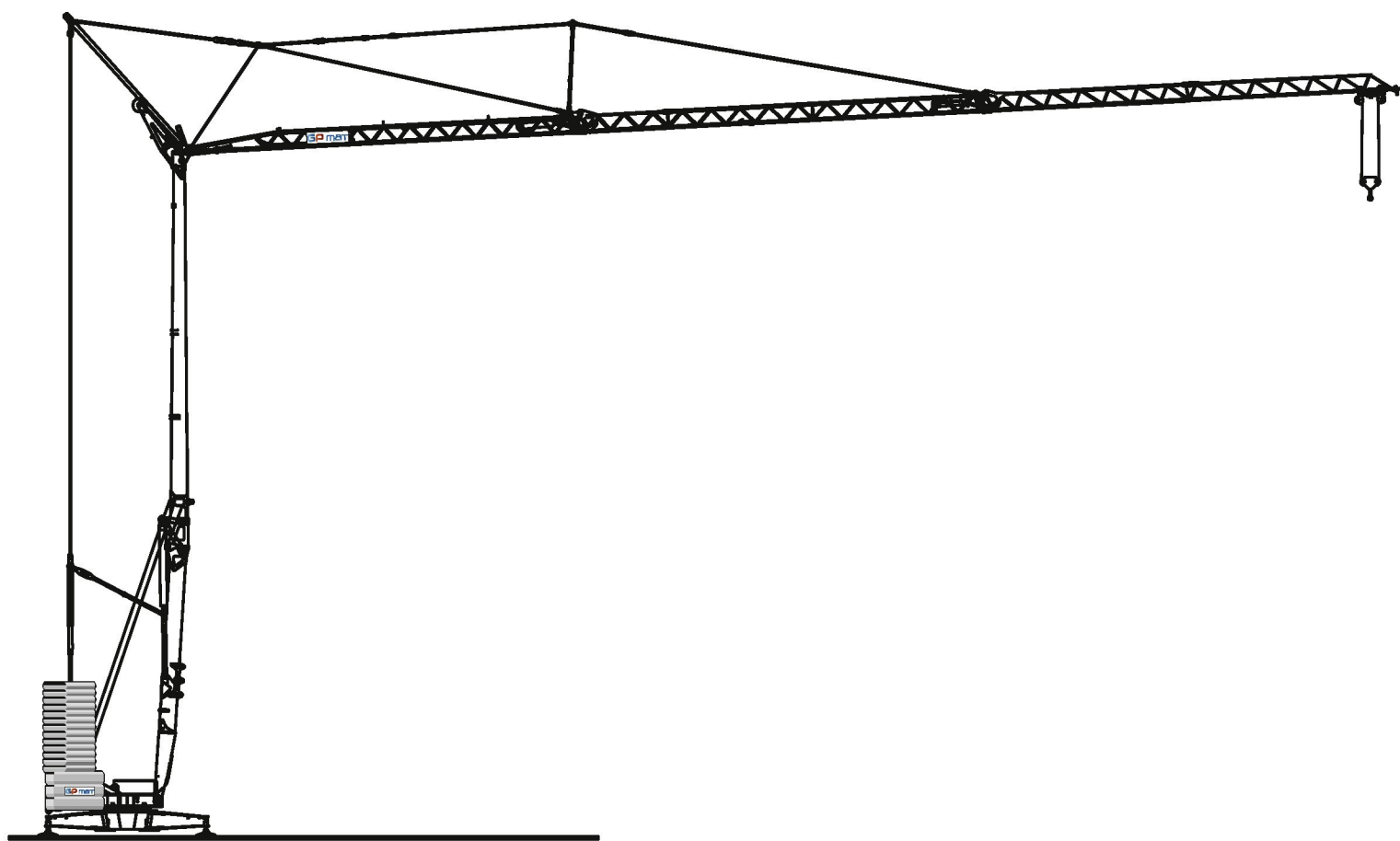


GPmatic 405

 CE EN 14439

14/40



Ce produit vous est présenté par notre

Agent Distributeur :



 **DOTAZIONE DI SERIE**

Sollevamento "overdrive" a quattro velocità con inverter, rotazione e carrello a tre velocità con inverter, zincatura della struttura e dei tiranti, contrappeso, braccio impennabile, carrello rampante con motore e finecorsa alla base della torre, funzionamento con braccio ripiegato, comando a pulsantiera via cavo e radiocomando, carter di protezione per ralla e meccanismi, predisposizione per autozavorramento, armadio elettrico in acciaio inox, documentazione a norme CEE.

 **STANDARD FEATURES**

4-speed lifting, 3-speed rotation and trolley with inverter control, galvanised structure, counterweight, pull-up jib, translation trolley with motor and limit switch at base of gantry, operation with folden jib, cable-operated pushbutton remote control and radio control, guard for slewing ring and mechanisms, designed to allow installation of self-ballasting device, stainless steel electrical cabinet, documentation in accordance with EU standards.

 **EQUIPEMENT DE SERIE**


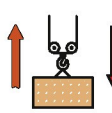








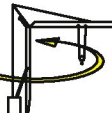








Levage à quatre vitesses, chariot et rotation à trois vitesses à contrôle électronique, galvanisation de la structure et des tirants, contrepoids, flèche relevable, moteur de chariot et fin de course à la base de la tour, fonctionnement bras replié, commande par câble et commande radio, carter de protection pour la couronne et les mécanismes, predisposition pour autolestage, armoire électrique en acier inox, documentation conforme aux normes CEE.

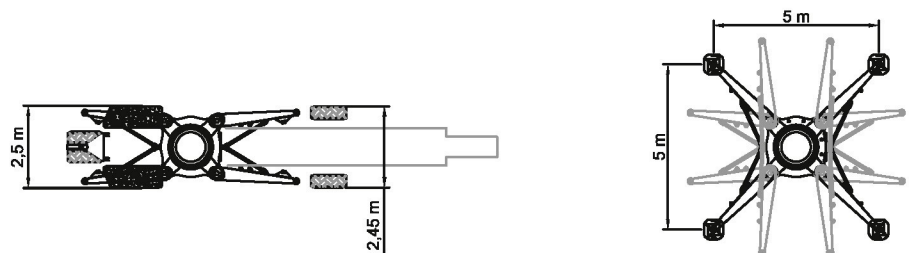
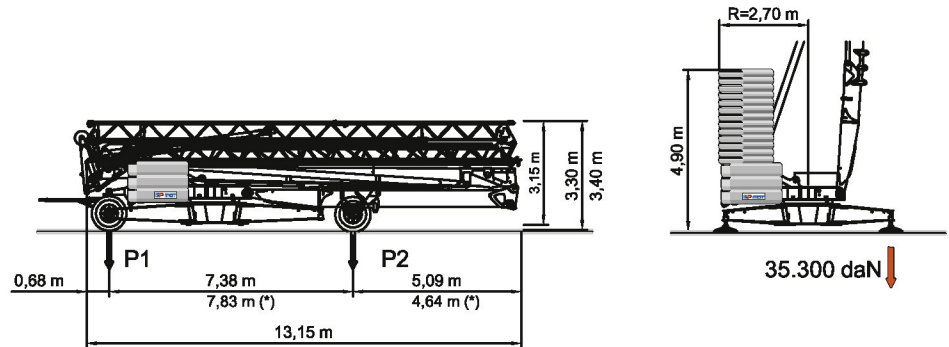
 **SERIENAUSSTATTUNG**

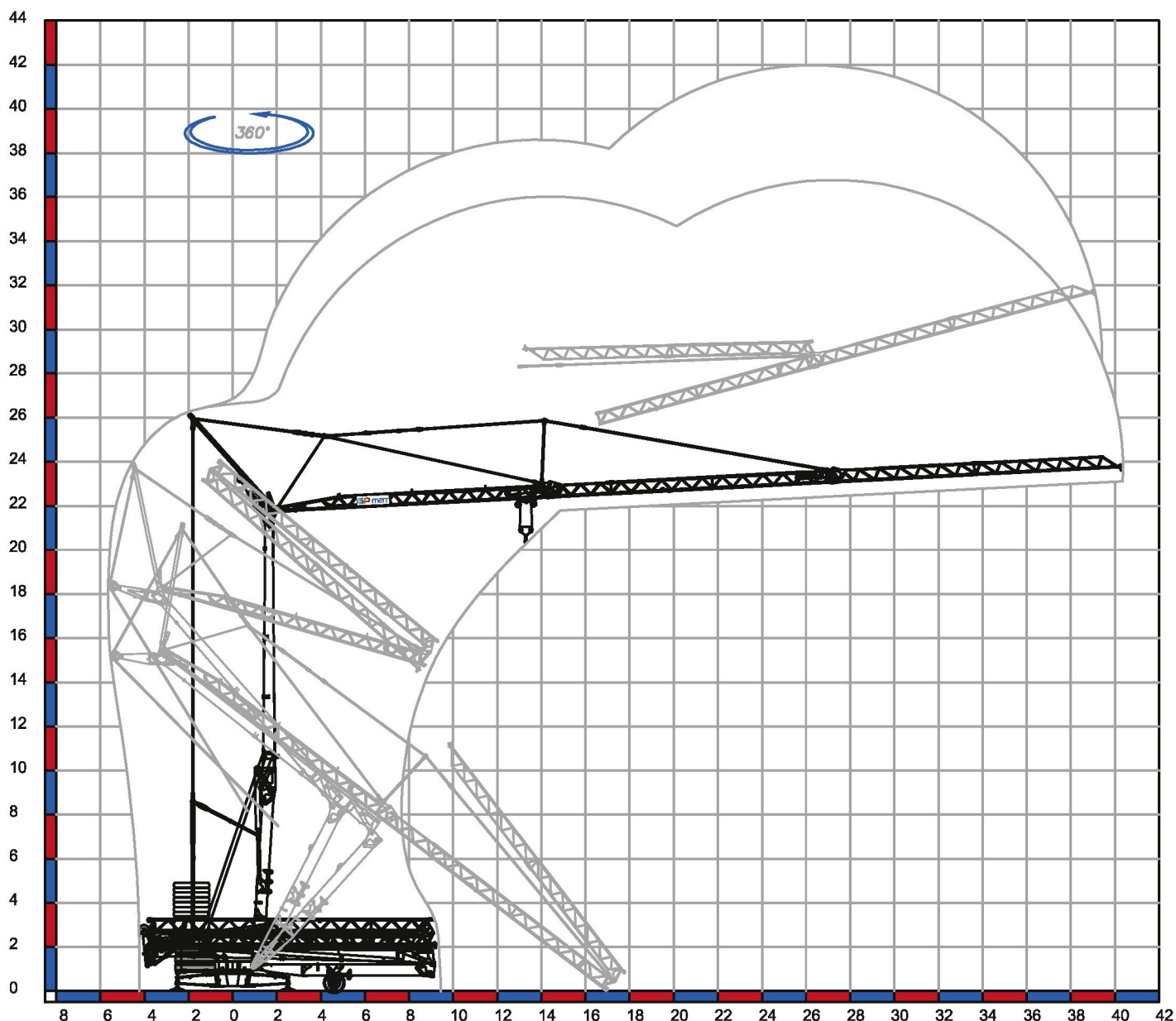
Heben mit vier Geschwindigkeiten, Laufkatze und Rotation mit drei Geschwindigkeiten, Strukturverzinkung, Gegengewicht, hochklappbarer Arm, aufsteigender Wagen mit Motor und Anschlag an der Basis des Turms, Funktionieren mit eingeklapptem Arm, Steuerung mit Druckknopftafe via Kabel und Funksteuerung, Schutzvorrichtungen für Drehver-bindungen und Mechanismen, Vorbereitung für Selbstballasteinahme, elektrischer Schrank aus rostfreiem Stahl, Dokumentation gemäß EC Vorschriften.

 **DOTACION DE SERIE**

Levantamiento a cuatro velocidades, carro y rotación a tres velocidades con control electrónico, galvanización de la estructura, contrapeso, brazo empinnable, carro rampante con motor y fin de carrera en la base de la torre, funcionamiento con brazo replgado, funcionamiento por pulsadores via cable y radioccontrol, cárter de protección para corona de giro y mecanismos, predisposición para autocontrapeso, armario eléctrico de acero inox, documentación según normas CEE.

	400V (±10%) 50 Hz		18kVA			
	m/l'					
	kg	6	20	30	42	
kW	4000	4000	1400	1400		
15 (Inverter)						
	m/l'					
	kW	17,8	28,6	53,5 (↗39,3)		
3 (Inverter)						
	n/l'					
	kW	0,13	0,34	0,68		
3,7 (Inverter)						
	min			19.830 kg		8.100 kg + 19.500 kg
	kW	3				
	8100 kg	5400 kg	2700 kg	0 kg		
P1	13233 kg 14077 kg *	11095 kg 11907 kg *	8958 kg 9737 kg *	6820 kg 7567 kg *		
P2	14697 kg 13853 kg *	14135 kg 13323 kg *	13572 kg 12793 kg *	13010 kg 12263 kg *		





Déroulement de montage sur 360°

NANTES

Z.A. de la Forêt
 44140 LE BIGNON
 Tél. 02 40 78 10 10 - Fax 02 40 78 11 00

AVIGNON

163 Avenue du Grenache
 ZAC du Plan
 84320 ENTRAIGUES SUR LA SORGUE
 Tél. 04 90 48 00 48 - Fax 04 90 48 00 00

contact@gpmat.fr - www.gpmat.fr



Filiale : GP MAT OCÉAN INDIEN

