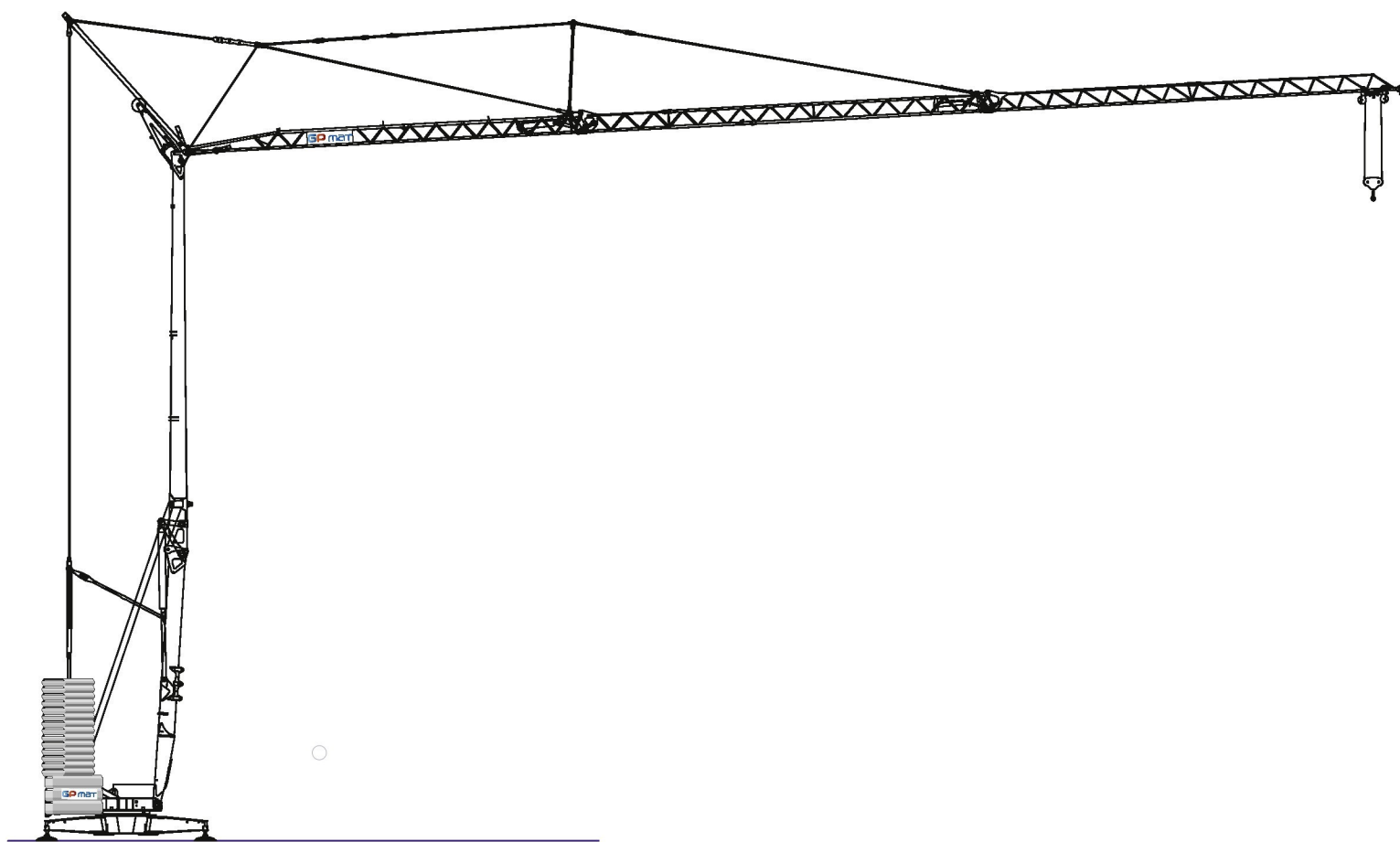


GPmatic 40

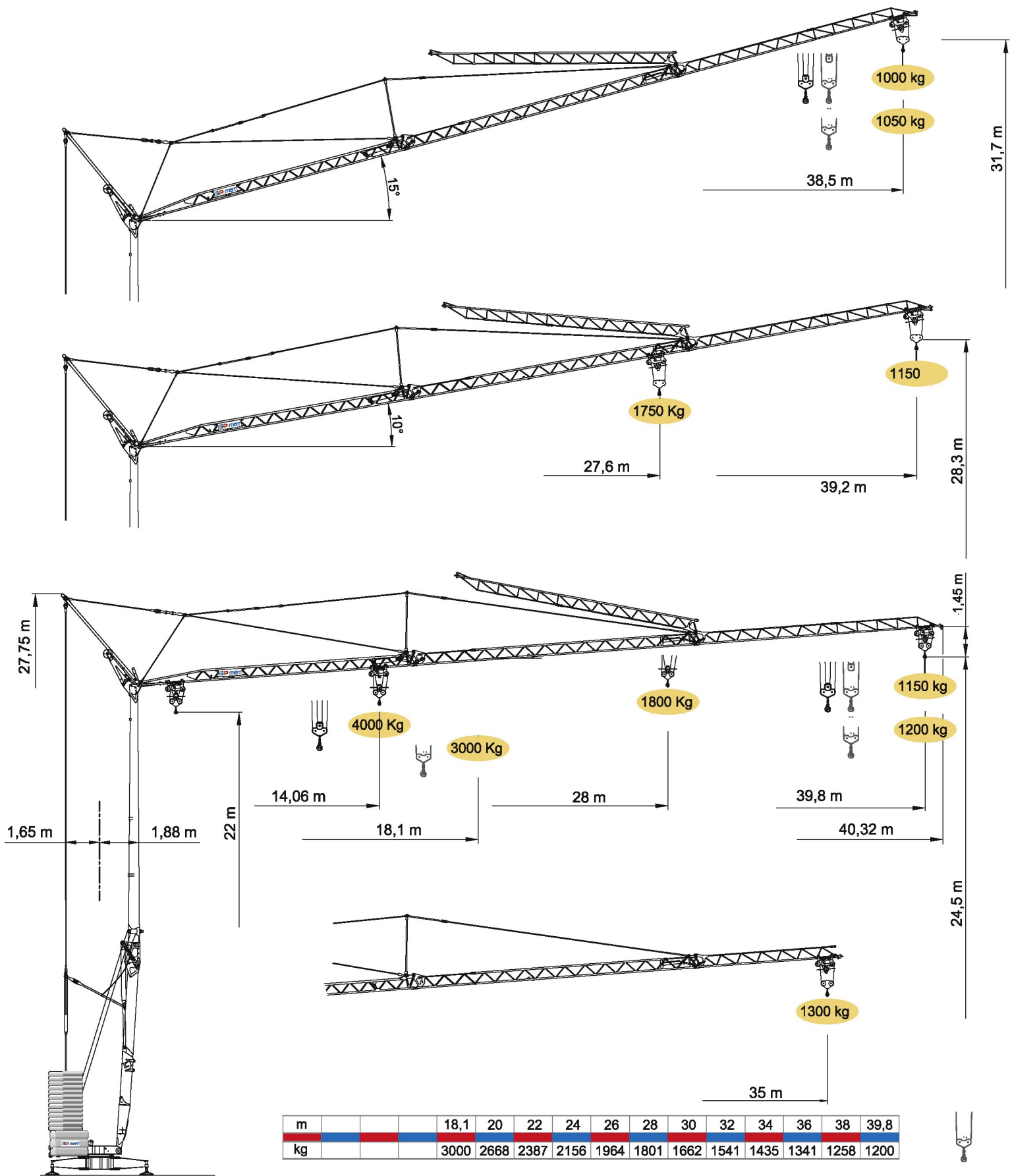


12/40



Ce produit vous est présenté par notre
Agent Distributeur :





m				18,1	20	22	24	26	28	30	32	34	36	38	39,8
kg				3000	2668	2387	2156	1964	1801	1662	1541	1435	1341	1258	1200

m		14	16	18	20	22	24	26	28	30	32	34	36	38	39,8
kg		4000	3421	2970	2618	2337	2106	1914	1751	1612	1491	1385	1291	1208	1150



DOTAZIONE DI SERIE

Sollevamento "overdrive" con inverter a 4 velocità, rotazione e carrello con inverter 3 velocità, zincatura della struttura e dei tiranti, contrappeso, braccio impennabile, carrello rampante con motore e finecorsa alla base della torre, funzionamento con braccio ripiegato, telecomando integrato, pulsantiera di emergenza, carter di protezione per ralla e meccanismi, predisposizione per autozavorranento, armadio elettrico in acciaio inox, documentazione a norme CEE.



STANDARD FEATURES

4-speed lifting, 3-speed rotation and trolley with inverter control, galvanised structure, counterweight, pull-up jib, translation trolley with motor and limit switch at base of gantry, operation with folded jib, remote radio control, emergency cable-operated control, guard for slewing ring and mechanisms, designed to allow installation of self-ballasting device, stainless steel electrical cabinet, documentation in accordance with EU standards.



EQUIPEMENT DE SERIE

Levage a quatre vitesses, chariot et rotation à trois vitesses à contrôle électronique, galvanisation de la structure et des tirants, contrepoids, flèche relevable, moteur de chariot et fin de course à la base de la tour, fonctionnement bras replié, commande radio, commande d'urgence avec câble, carter de protection pour la couronne et les mécanismes, prédisposition pour auto lestage, armoire électrique en acier inox, documentation conforme aux normes CEE.



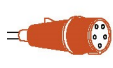
SERIENAUSSTATTUNG

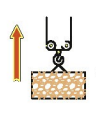
Heben mit vier Geschwindigkeiten, Laufkatzen- und Drehbewegung mit drei Geschwindigkeiten, Tragkonstruktion feuerverzinkt, Gegengewicht, hochklappbarer Ausleger, Laufkatzenbewegung in Schrägstellung des Auslegers, Laufkatzenmotor und Endscharter an der Basis des Turms, Betrieb mit eingeklapptem Ausleger, Steuerung mit Funk oder Druckknopfaste über Kabel, die mechanischen Teile sind alle durch eine Abdeckung geschützt, vorbereitet für Selbstballastierungseinrichtung, Schrank aus rostfreiem Stahl, Dokumentation gemäß EC Vorschriften.

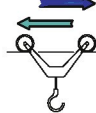


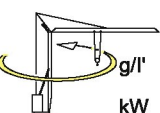
DOTACION DE SERIE

Levantamiento a cuatro velocidades, carro y rotación a tres velocidades con control electrónico, galvanización de la estructura, contrapeso, brazo empinnable, carro rampante con motor y fin de carrera en la base de la torre, funcionamiento con brazo replgado, radiocontrol y pulsadores via cable por l'emergencia, cárter de protección para corona de giro y mecanismos, predisposición para autocontrapeso, armario eléctrico de acero inox, documentación según normas CEE.

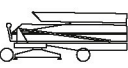

	400 V (+10% - 10%) 50 Hz	12 kVA
---	-----------------------------	--------

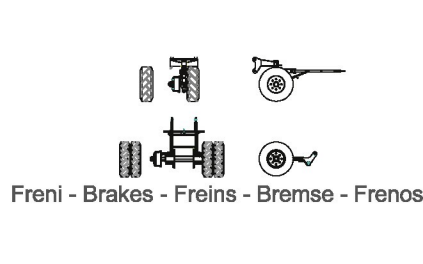
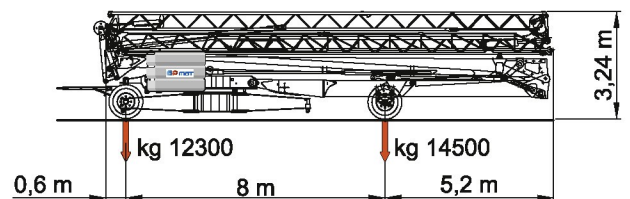
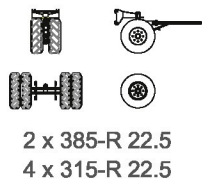
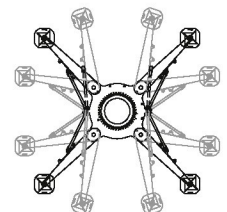
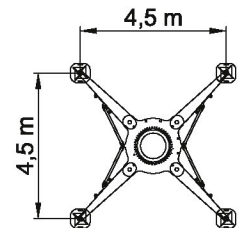
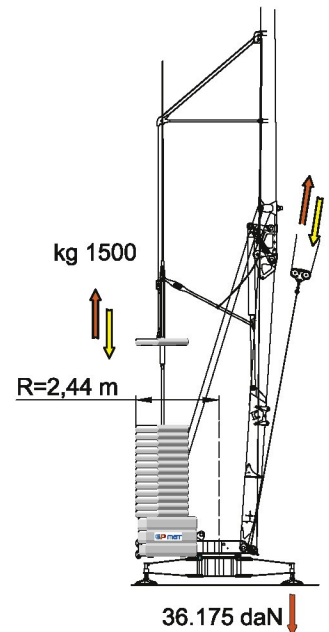
	m/l'	8	20	46	56
kg		3000	3000	1200	1000
kW		11 (Inverter)			

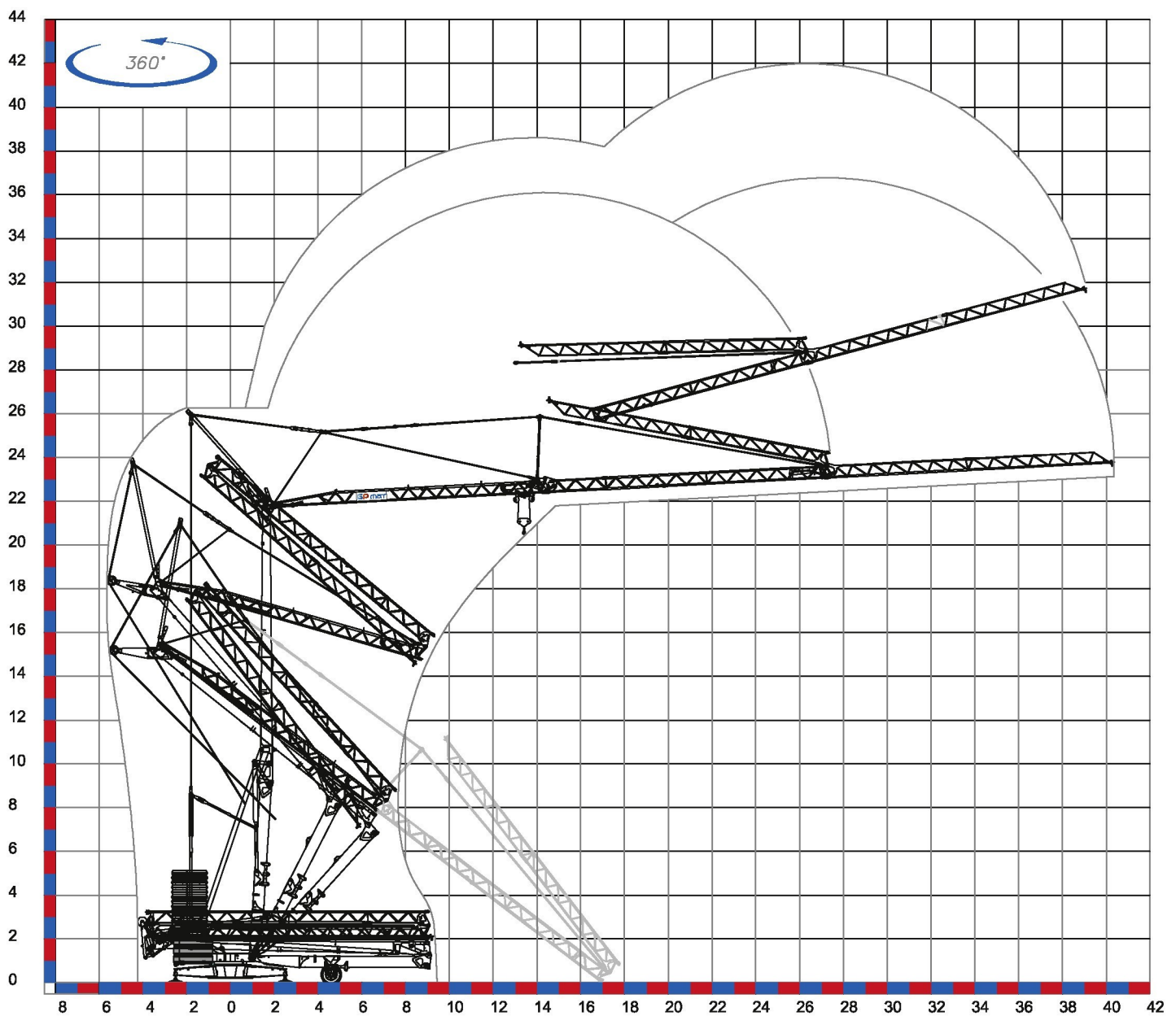
	m/l'	17.3	28.6	53.5 (39.3)
kW		3 (Inverter)		

	g/l'	0.15	0.38	0.75
kW		3 (Inverter)		

	min	14
kW		3

	18.500 Kg		8100 Kg + 19500 Kg
---	-----------	---	--------------------------





Déroulement de montage sur 360°



NANTES

Z.A. de la Forêt
44140 LE BIGNON
Tél. 02 40 78 10 10 - Fax 02 40 78 11 00

AVIGNON

163 Avenue du Grenache
ZAC du Plan
84320 ENTRAIGUES SUR LA SORGUE
Tél. 04 90 48 00 48 - Fax 04 90 48 00 00



contact@gpmat.fr - www.gpmat.fr



Filiale : GP MAT OCÉAN INDIEN