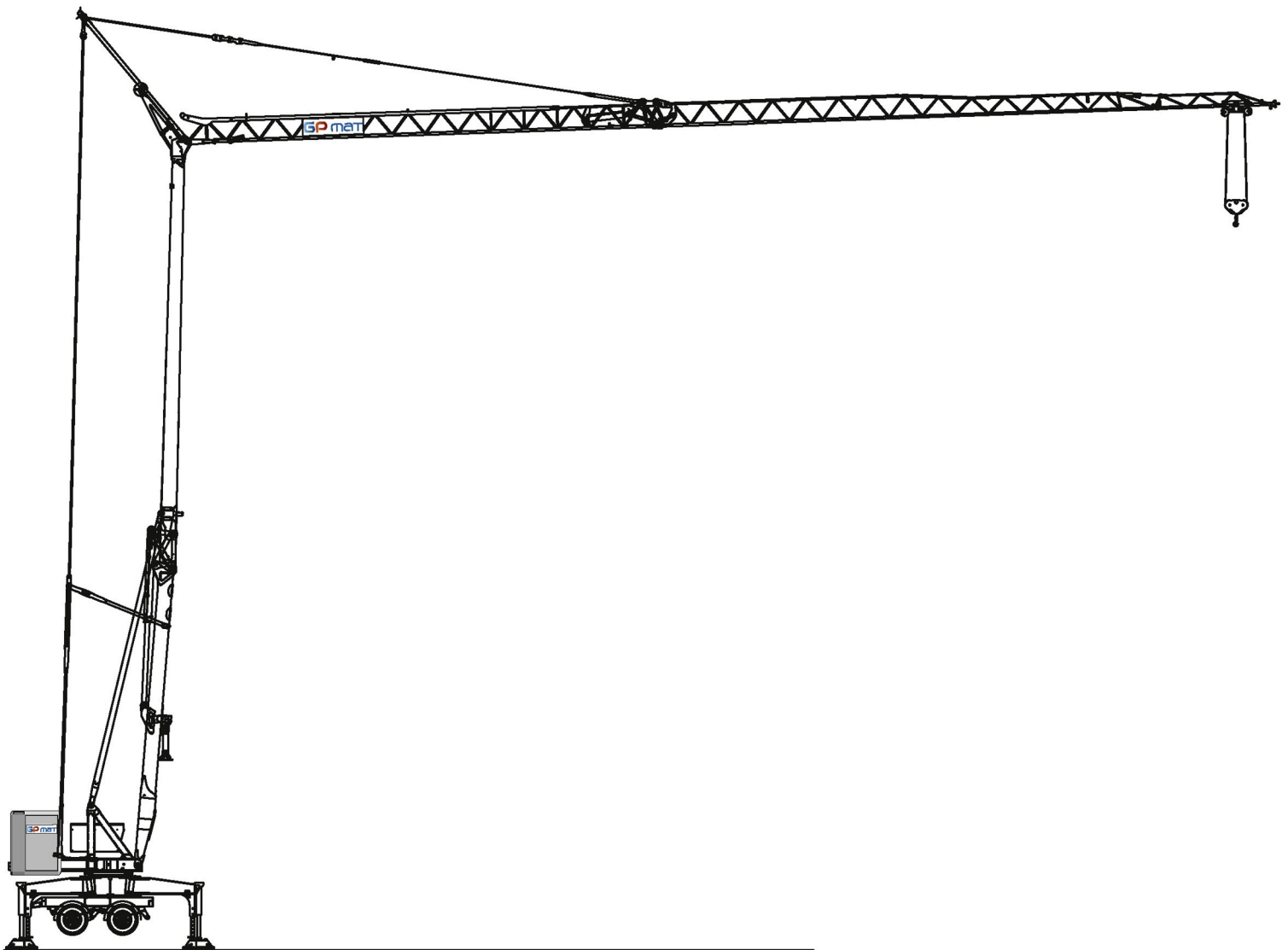


# GPmatic BI Fast

 **CE** EN 14439

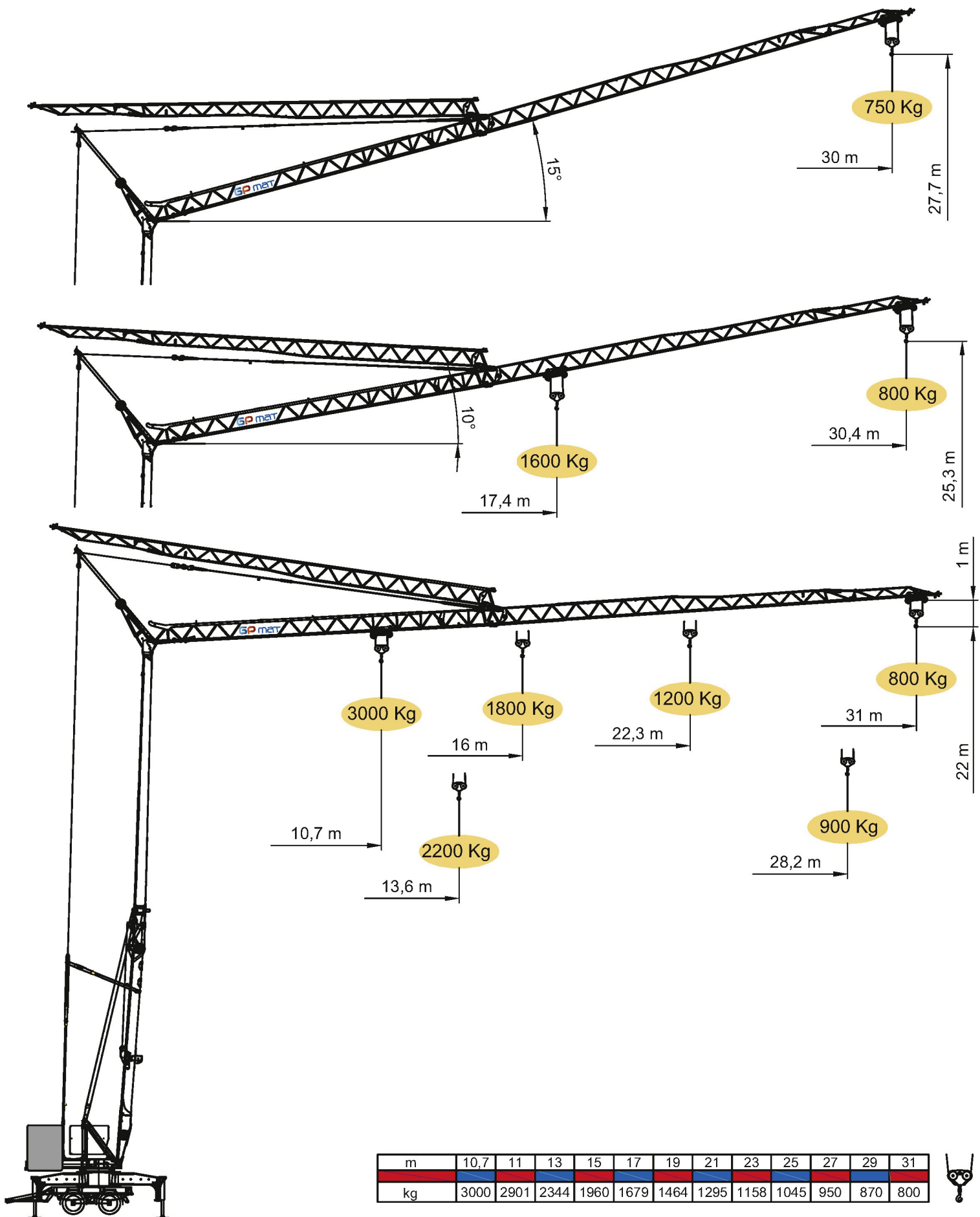
80/30



Ce produit vous est présenté par notre

**Agent Distributeur :**





## EQUIPEMENT DE SERIE

Levage à quatre vitesses, chariot et rotation à trois vitesses à contrôle électronique, galvanisation de la structure et des tirants, contrepoids, flèche relevable, moteur de chariot et fin de course à la base de la tour, fonctionnement bras replié, commande par câble, carter de protection pour la couronne et les mécanismes, predisposition pour commande radio, armoire électrique en acier inox, documentation conforme aux normes CEE.

## STANDARD FEATURES

4-speed lifting, 3-speed rotation and trolley with inverter control, galvanised structure, counterweight, pull-up jib, translation trolley with motor and limit switch at base of gantry, operation with folden jib, cable-operated pushbutton remote control, guard for slewing ring and mechanisms, designed to allow installation of radio control, stainless steel electrical cabinet, documentation in accordance with EU standards.

## DOTAZIONE DI SERIE


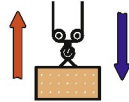








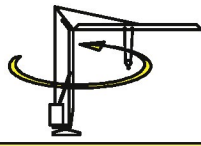







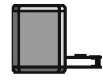
Sollevamento "overdrive" a 4 velocità con inverter, rotazione e carrello a tre velocità con inverter, zincatura della struttura e dei tiranti, contrappeso, braccio impennabile, carrello rampante con motore e finecorsa alla base della torre, funzionamento con braccio ripiegato, comando a pulsantiera via cavo, carter di protezione per ralla e meccanismi, predisposizione per radiocomando, armadio elettrico in acciaio inox, documentazione a norme CEE.

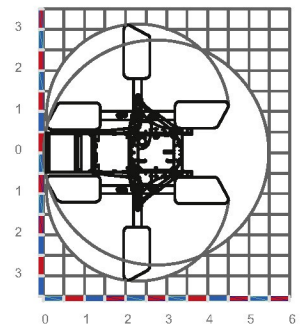
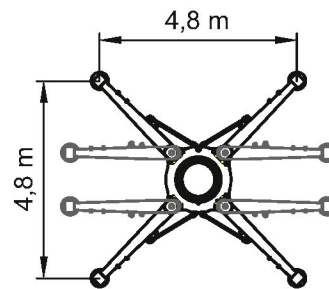
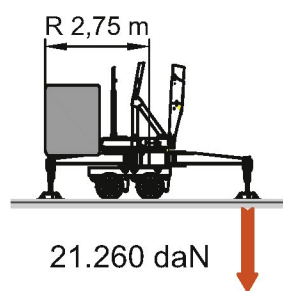
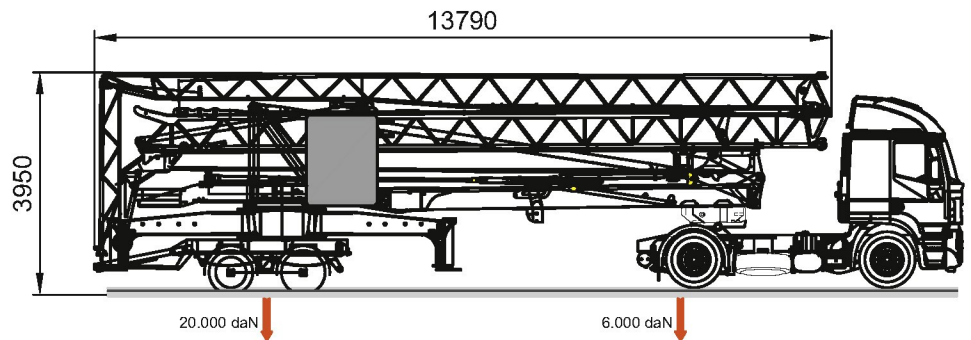
## SERIENAUSSTATTUNG

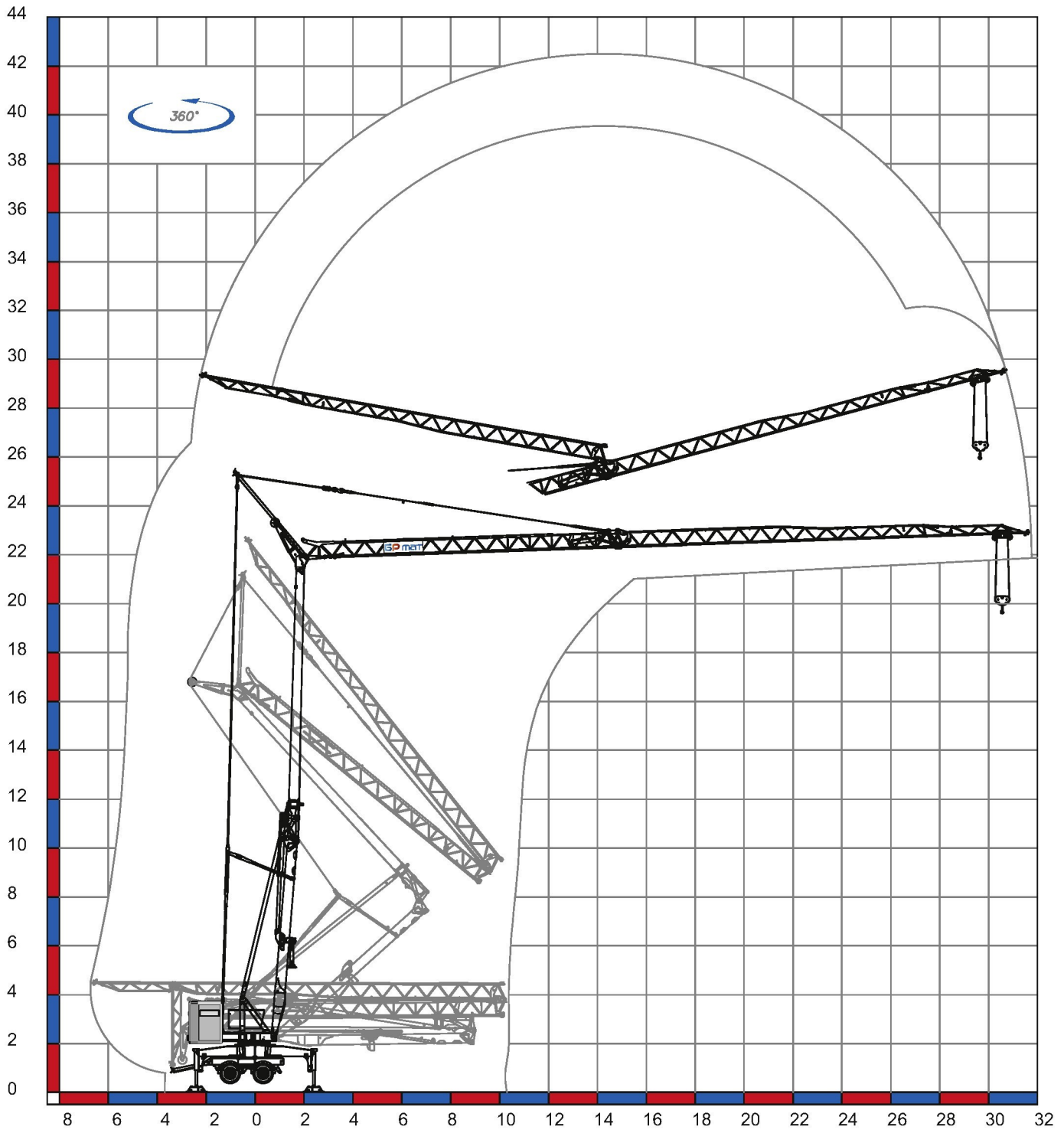
Heben mit vier Geschwindigkeiten, Laufkatze und Rotation mit drei Geschwindigkeiten, Strukturverzinkung, Gegengewicht, hochklappbarer Arm, aufsteigender Wagen mit Motor und Anschlag an der Basis des Turms, Funktionieren mit eingeklapptem Arm, Steuerung mit Druckknopftaste via Kabel, Schutzvorrichtungen für Drehverbindungen und Mechanismen, Vorbereitung für Funksteuerung, elektrischer Schrank aus rostfreiem Stahl, Dokumentation gemäß EC Vorschriften.

## DOTACION DE SERIE

Levantamiento a cuatro velocidades, carro y rotación a tres velocidades con control electrónico, galvanización de la estructura, contrapeso, brazo empuñable, carro rampante con motor y fin de carrera en la base de la torre, funcionamiento con brazo repliegado, funcionamiento por pulsadores via cable, carter de protección para corona de giro y mecanismos, predisposición para radiocomando, armario eléctrico de acero inox, documentación según normas CEE.

	400V (±10%) 50 Hz		12kVA		
	m/l'				
	kg	6	20	42	50
kW	3000	3000	1200	800	
11 (Inverter)					
	m/l'				
	kW	17.8	28.6	53.5 (∅ 39.3)	
3 (Inverter)					
	n/l'				
	kW	0.15	0.42	0.84	
2.2 (Inverter)					
	min				
kW		12			
		3			
	25 km/h		15.900 kg		2 x 4200 kg + 1700 kg (Fe)





Déroulement de montage sur 360°

**NANTES**

Z.A. de la Forêt  
 44140 LE BIGNON  
 Tél. 02 40 78 10 10 - Fax 02 40 78 11 00

**AVIGNON**

163 Avenue du Grenache  
 ZAC du Plan  
 84320 ENTRAIGUES SUR LA SORGUE  
 Tél. 04 90 48 00 48 - Fax 04 90 48 00 00



contact@gpmat.fr - [www.gpmat.fr](http://www.gpmat.fr)



Filiale : GP MAT OCÉAN INDIEN

**GP matic 31Fast 80/30**