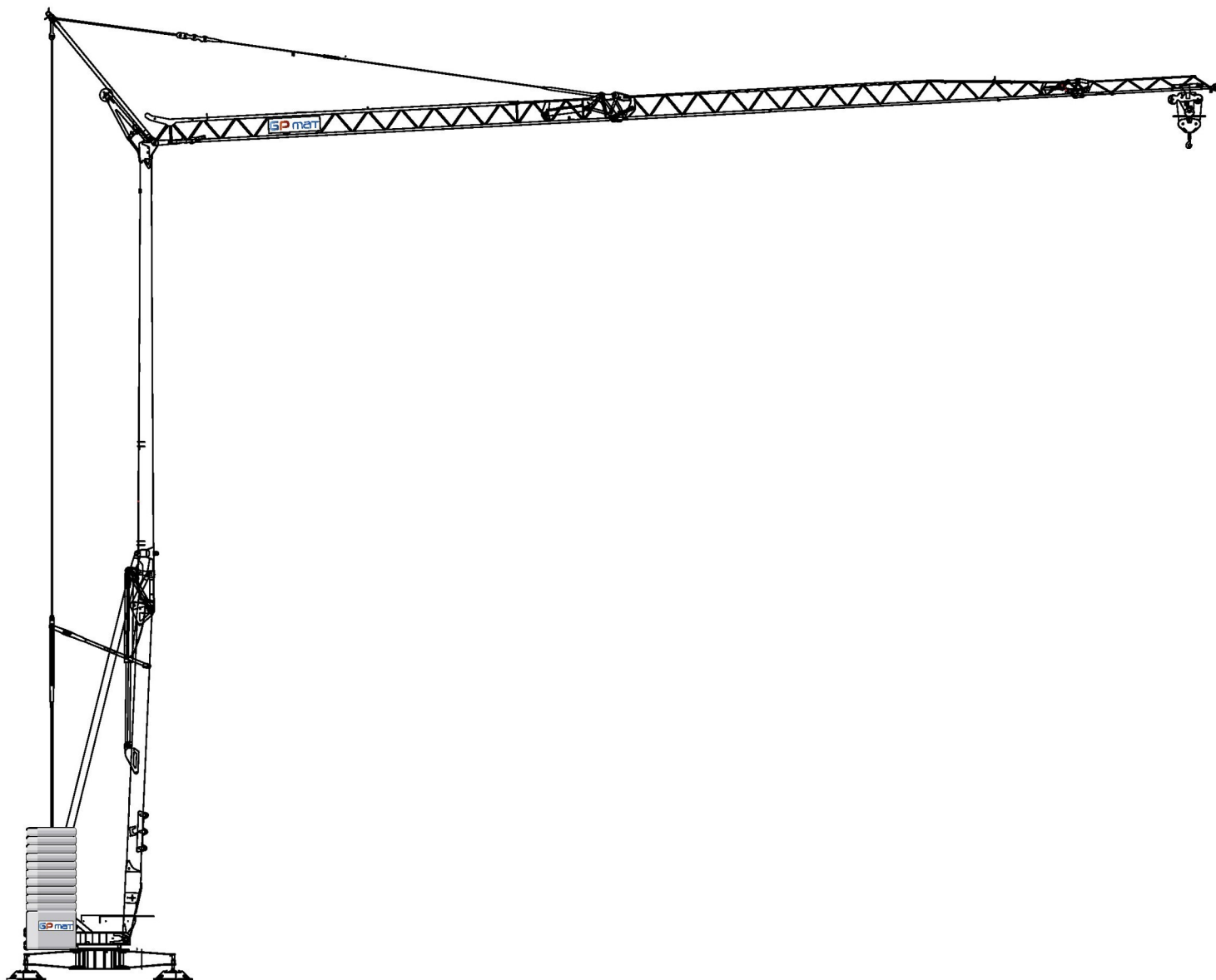


GPmatic 30



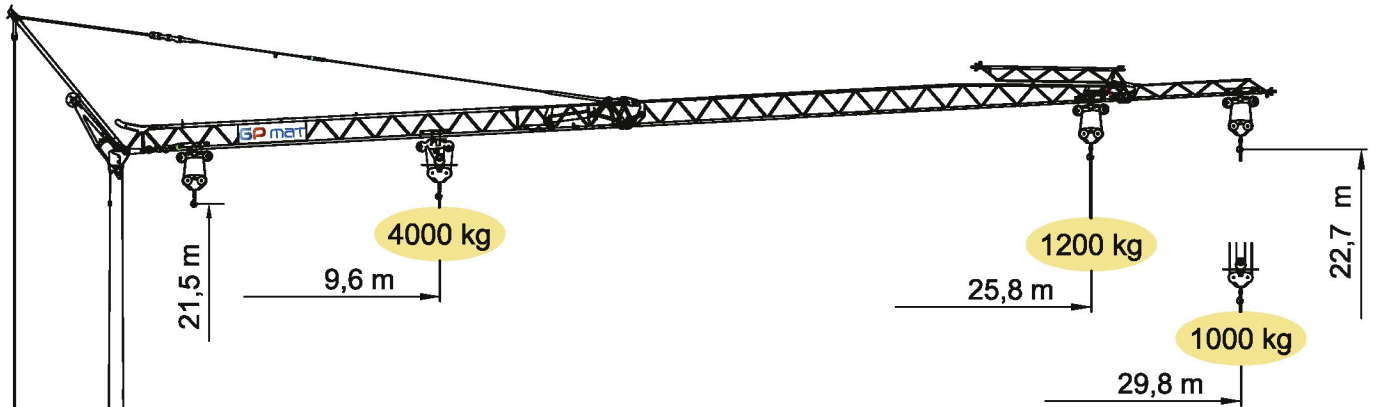
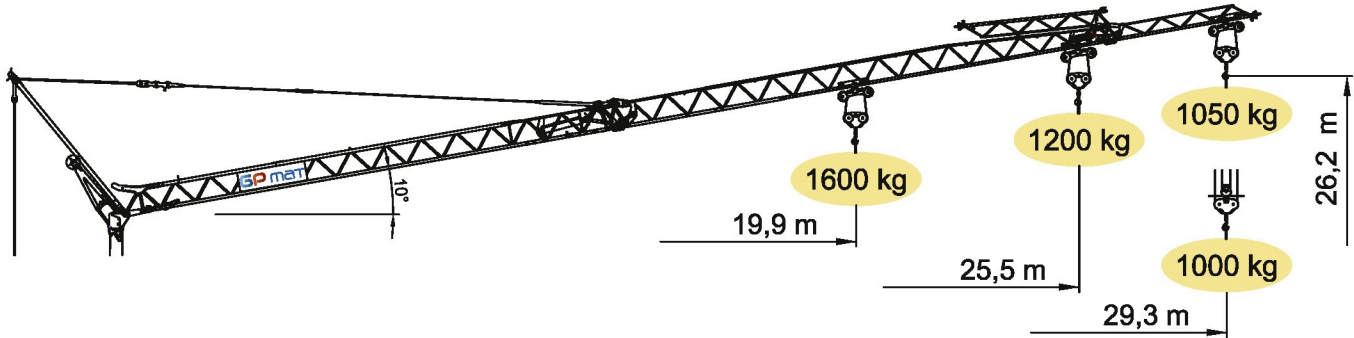
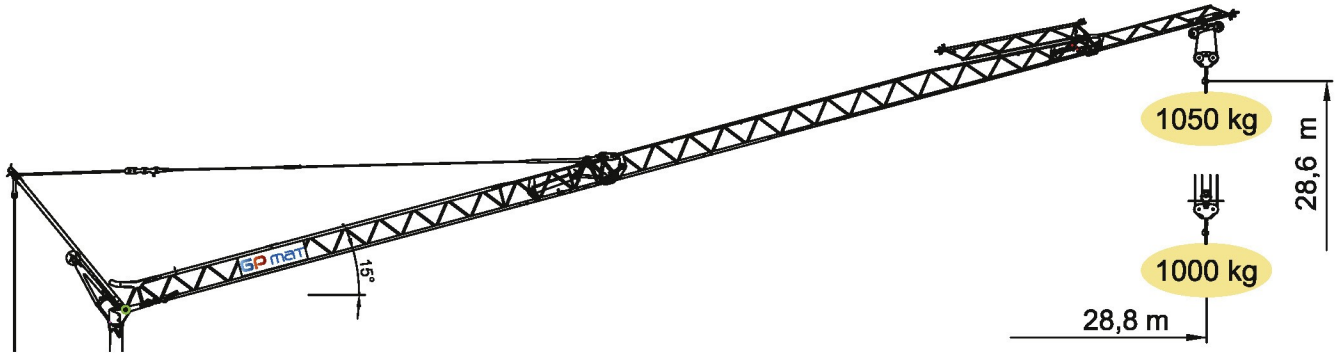
EN 14439



10/40







Ce produit vous est présenté par notre
Agent Distributeur :





kg	3000	2557	2184	1902	1681	1503	1357	1235	1131	1050	
m	12,2	14	16	18	20	22	24	26	28	29,8	

kg	4000	3030	2514	2140	1857	1635	1456	1309	1186	1081	1000		
m	9,6	12	14	16	18	20	22	24	26	28	29,8		



DOTAZIONE DI SERIE

Sollevamento "overdrive" a quattro velocità con inverter, rotazione e carrello a tre velocità con inverter, zincatura della struttura e dei tiranti, carrello rampante con motore e fincorsa alla base della torre, funzionamento con braccio ripiegato, comando a pulsantiera via cavo, carter di protezione per ralla e meccanismi, predisposizione per autozavorramento e radiocomando, armadio elettrico in acciaio inox, documentazione a norme CEE.



STANDARD FEATURES

4-speed lifting, 3-speed rotation and trolley with inverter control, galvanised structure, counterweight, pull-up jib, translation trolley with motor and limit switch at base of gantry, operation with folden jib, cable-operated pushbutton remote control, guard for slewing ring and mechanisms, designed to allow installation of self-ballasting device and radio control, stainless steel electrical cabinet, documentation in accordance with EU standards.



EQUIPEMENT DE SERIE

Levage à quatre vitesses, chariot et rotation à trois vitesses à contrôle électronique, galvanisation de la structure et des tirants, contrepoids, flèche relevable, moteur de chariot et fin de course à la base de la tour, fonctionnement bras replié, commande par câble, carter de protection pour la couronne et les mécanismes, predisposition pour autolestage et commande radio, armoire électrique en acier inox, documentation conforme aux normes CEE.



SERIENAUSSTATTUNG

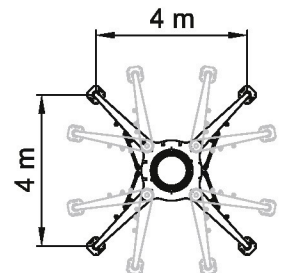
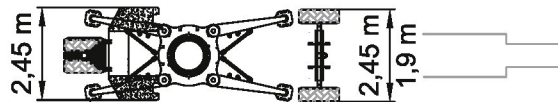
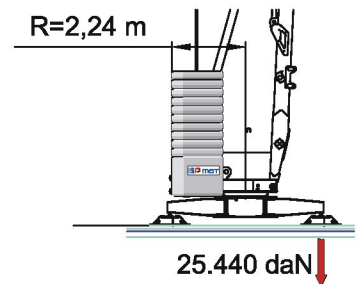
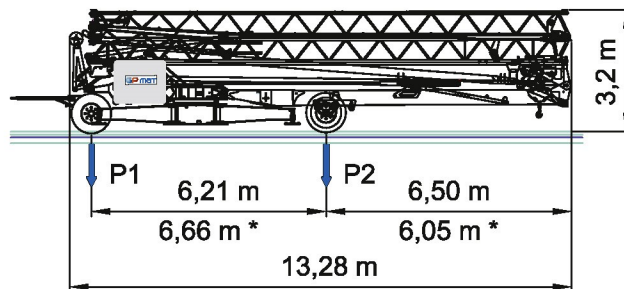
Heben mit vier Geschwindigkeiten, Laufkatze und Rotation mit drei Geschwindigkeiten, Strukturverzinkung, Gegengewicht, hochklappbarer Arm, aufsteigender Wagen mit Motor und Anschlag an der Basis des Turms, Funktionieren mit eingeklapptem Arm, Steuerung mit Druckknopf via Kabel, Schutzvorrichtungen für Drehverbindungen und Mechanismen, Vorbereitung für Selbstballasteinahme und Funksteuerung, elektrischer Schrank aus rostfreiem Stahl, Dokumentation gemäß EC Vorschriften.

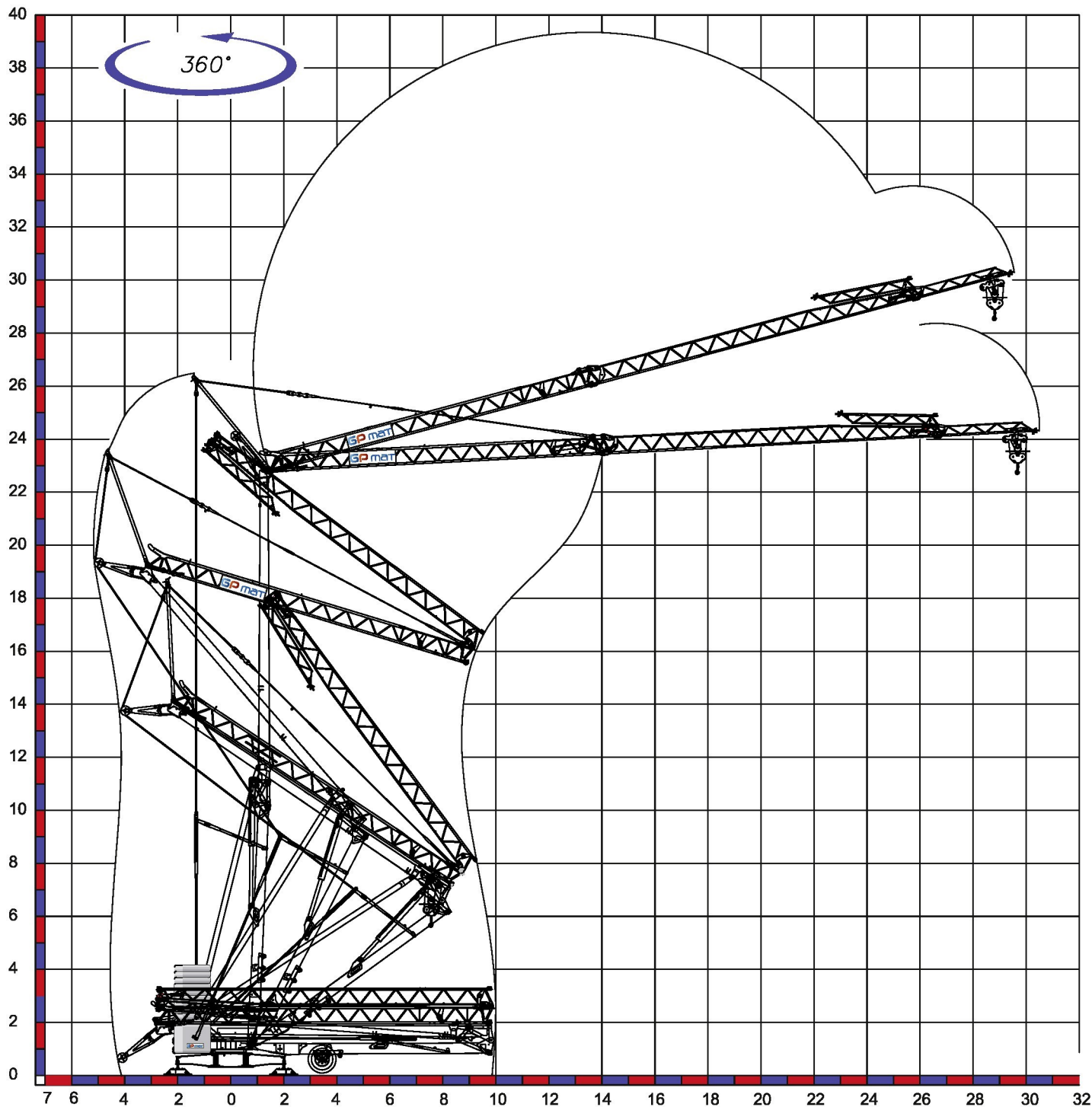


DOTACION DE SERIE

Levantamiento a cuatro velocidades, carro y rotación a tres velocidades con control electrónico, galvanización de la estructura, contrapeso, brazo empinable, carro rampante con motor y fin de carrera en la base de la torre, funcionamiento con brazo repliegado, funcionamiento por pulsadores via cable, carter de protección para corona de giro y mecanismos, predisposición para autocontrapeso y radiocontrol, armario eléctrico de acero inox, documentación según normas CEE.

	400V (±10%) 50 Hz		12kVA		
	m/l'				
	kg	8	20	46	56
	kW	3000	3000	1200	800
11 (Inverter)					
	m/l'				
	kg	8 - 4*	20 - 10*	46 - 23*	56 - 28*
	kW	2000 - 4000*	2000 - 4000*	1200 - 2400*	800 - 1600*
11 (Inverter)					
	m/l'				
	kg	17.8	28.6	53.5 (↗39.3)	
	kW	3 (Inverter)			
	n/l'				
	kg	0.15	0.42	0.84	
	kW	1.55 (Inverter)			
	min				
		12			
			13.150 kg		
					5.200 kg + 13.000 kg
		5200 kg	2600 kg	0 kg	
P1		6670 kg 7456 kg *	4648 kg 5395 kg *	2530 kg 3245 kg *	
P2		11680 kg 10894 kg *	11102 kg 10355 kg *	10620 kg 9905 kg *	





Déroulement de montage sur 360°

NANTES

Z.A. de la Forêt
 44140 LE BIGNON
 Tél. 02 40 78 10 10 - Fax 02 40 78 11 00

AVIGNON

163 Avenue du Grenache
 ZAC du Plan
 84320 ENTRAIGUES SUR LA SORGUE
 Tél. 04 90 48 00 48 - Fax 04 90 48 00 00

contact@gpmat.fr - www.gpmat.fr



Filiale : GP MAT OCÉAN INDIEN

Tél : 05.90.92.23.20 Fax : 05.90.92.19.20
 E-mail : electroservice0809@orange.fr

